



MONTHLY MEMBERSHIP PROGRESS REPORT

District 105 D

Results as of: 8/31/2015

GMT: Elisabeth Haderer

LOCATION ENGLAND

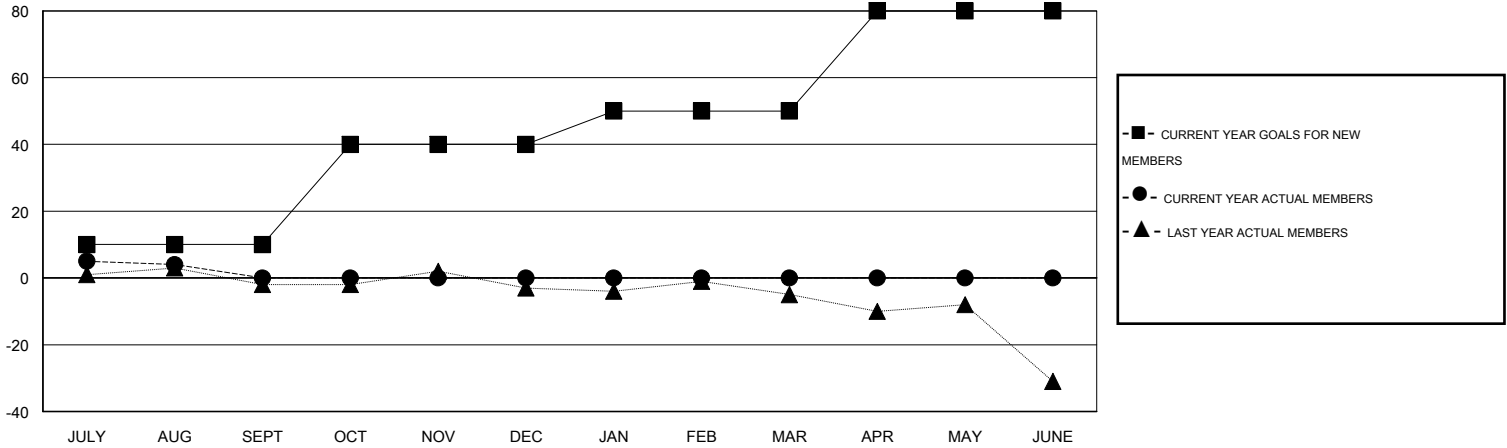
GMT CA 4

Clubs					Members				
RESULTS FOR 2015-2016					RESULTS FOR 2015-2016				
QUARTER	NEW CLUB GOAL	NEW CLUBS	DROPPED CLUBS	NET GAIN/LOSS	QUARTER	NEW MEMBER GOAL	CHARTER AND NEW MEMBERS ADDED	DROPPED MEMBERS	NET GAIN/LOSS
JULY/AUG/SEPT	0	0	0	0	JULY/AUG/SEPT	10	25	21	4
OCT/NOV/DEC	1	0	0	0	OCT/NOV/DEC	30	0	0	0
JAN/FEB/MAR	0	0	0	0	JAN/FEB/MAR	10	0	0	0
APR/MAY/JUNE	1	0	0	0	APR/MAY/JUNE	30	0	0	0

GOALS AND ACTUAL NEW CLUBS CUMULATIVE



GOALS AND ACTUAL MEMBERS CUMULATIVE



DROPPED CLUBS: 0	17 CLUBS OF 61 ADDED 1 OR MORE NEW MEMBERS	<u>GENDER DISTRIBUTION</u>	
<u>DROPPED MEMBERS</u>		MALE	860 (69.58%)
DECEASED	2	FEMALE	376 (30.42%)
CLUB CANCELLED	0	<u>FAMILY UNIT MEMBERS</u> 161	
OTHER	19	<u>HEAD OF HOUSEHOLD</u> 80	
TOTAL	21	<u>NON-HEAD OF HOUSEHOLD</u> 81	

[CLICK HERE FOR HEALTH ASSESSMENT DATA](#)